

DEVELOPING TRIBAL WELL-BEING INDICATORS FOR THE PUYALLUP INDIAN RESERVATION

*A Community on Ecosystem Services/ACES 2014 (Dec. 8-12)
Concurrent Session: Ecosystem Services & Human Well-Being*

**Jeffrey P. Thomas, Director
Timber, Fish & Wildlife Program
Puyallup Tribe of Indians**

**6824 Pioneer Way East Puyallup, WA
(253) 680-5565/office; (253) 405-7478/cell
jeffrey.Thomas@puyalluptribe.com**

***Mount Rainier &
Puyallup Indian Reservation
Tacoma, Wash, USA***

***Puyallup Reservation
Central Portion
in Foreground***

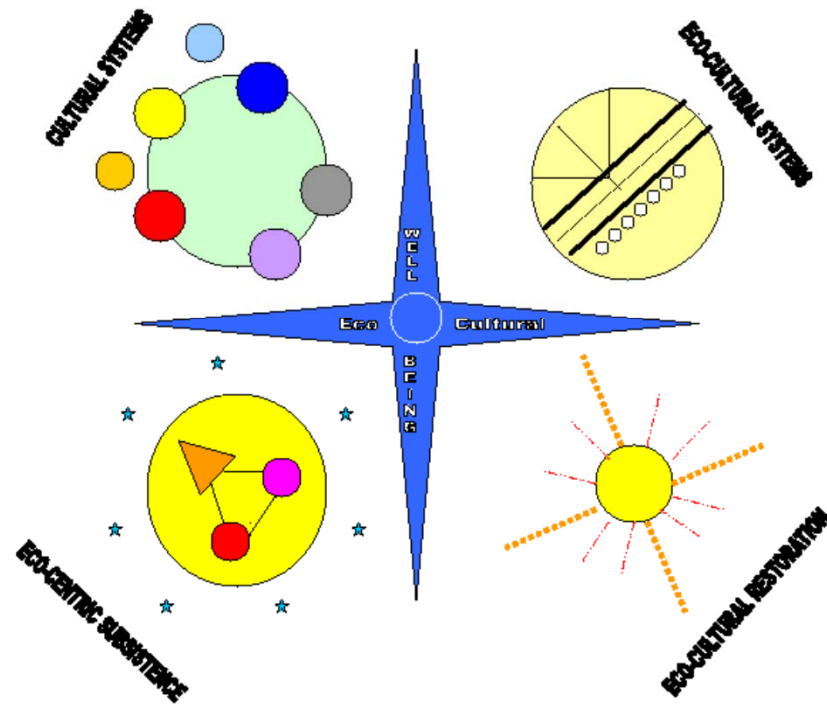


ECOSYSTEM SERVICES & TRIBAL WELL-BEING – PROGRAM GOALS:

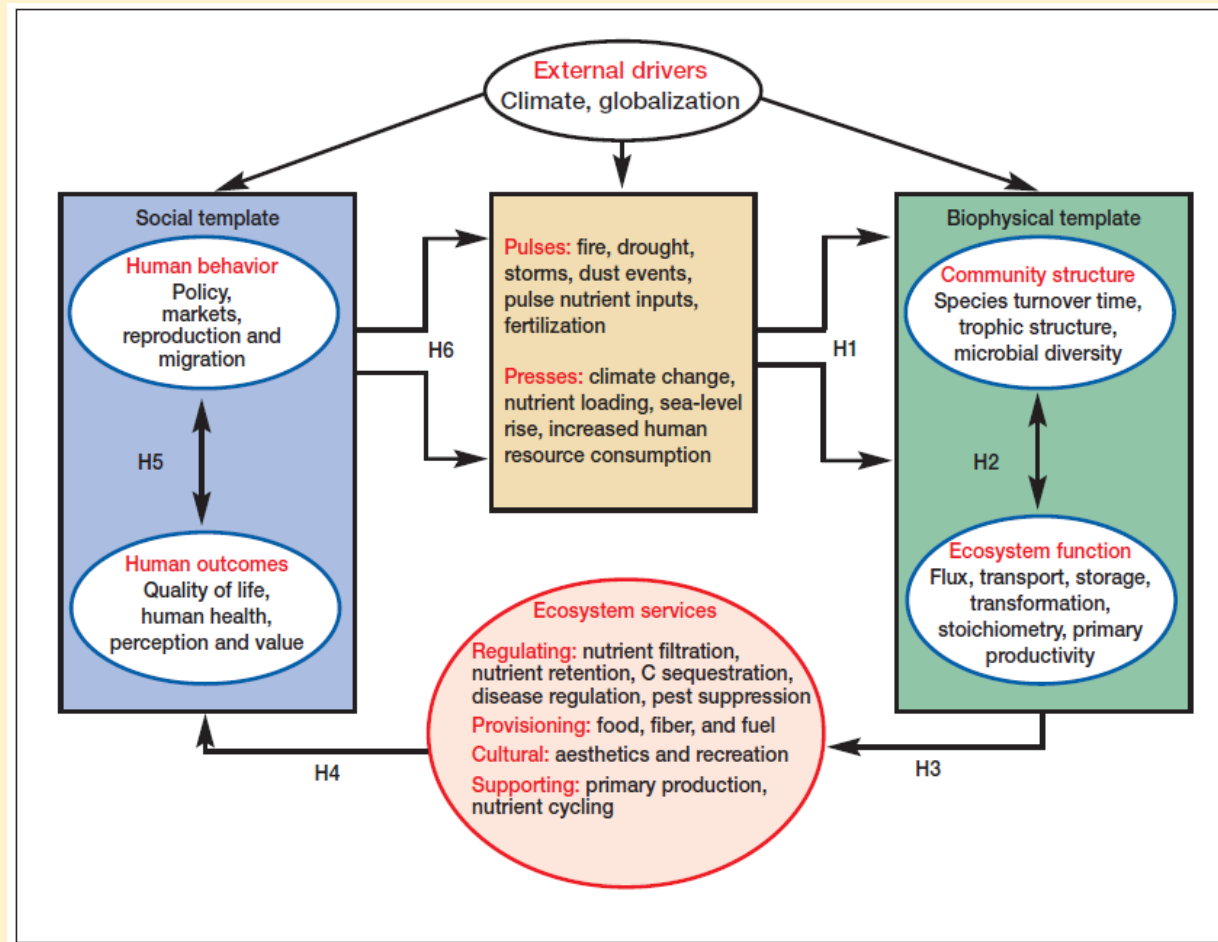
NEED TO ENSURE:

- Tribal members can access Reservation resources.
- *Tribal members are not marginalized from Reservation planning and policy development.*
- Historically important cultural landscapes and/or culturally significant species are suitably maintained.
- *Local science incorporates Puyallup tribal values.*
- Puyallup tribal knowledge and scientific knowledge are integrated with science and economical views.
- *Explanations of how Reservation biophysical processes should be viewed as having value are accommodated.*
- Ecological identity and identification with nature are continuously highlighted.
- *Facets of tribal well-being that are directly related to the condition of the natural environment are highlighted. AND*
- Puyallup tribal well-being receives attention during Reservation decisions.

THE ECO-CULTURAL RESTORATION SYSTEMS UNIVERSE MODEL



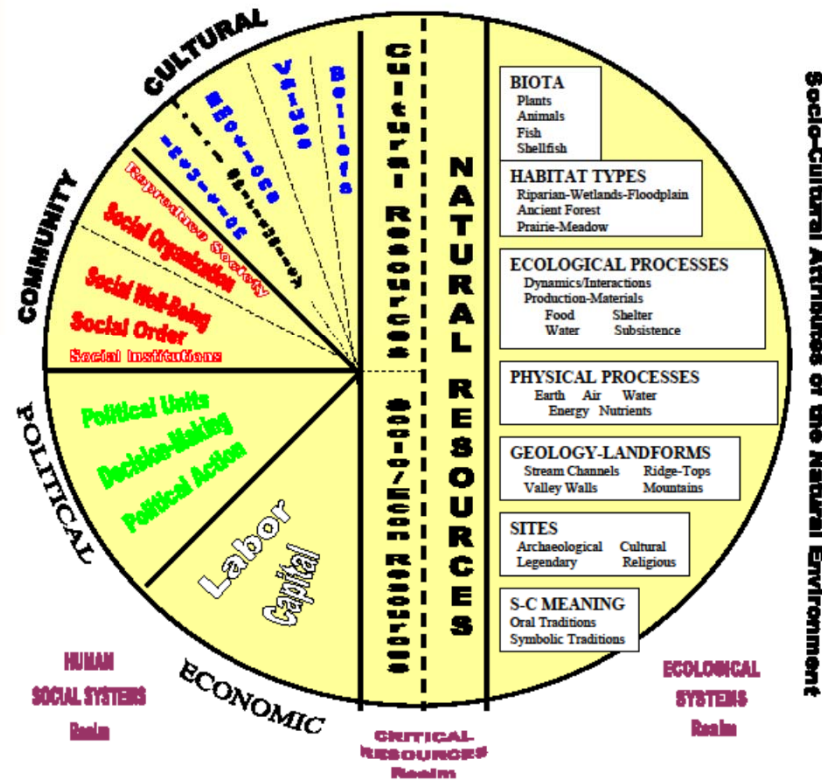
Collins et al (2010) – Pulse/Pressure Model



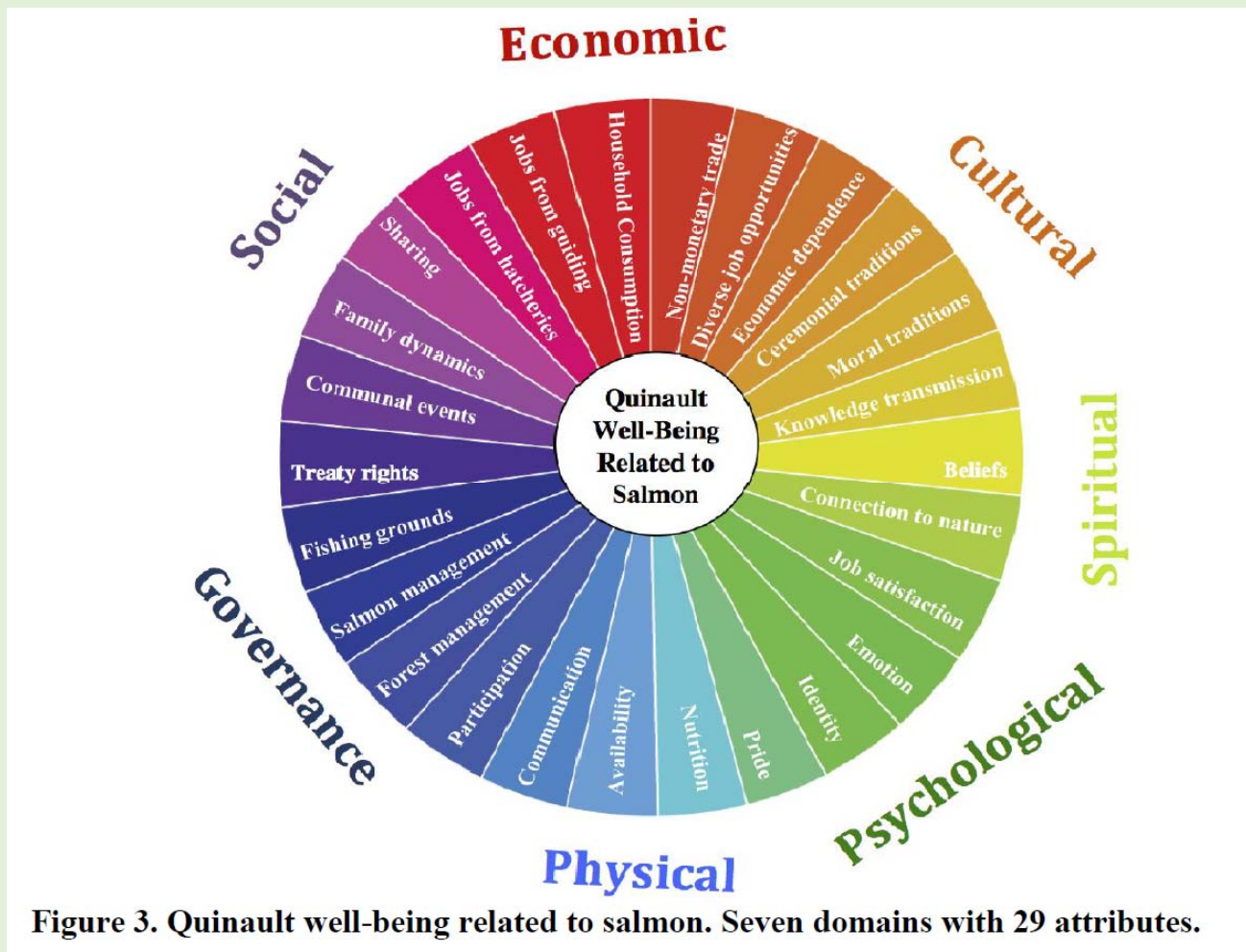
Created April 1995
 By - Jeffrey P. Thomas, Director
 Payalup Tribe of Indians - Forest Resources Program

(253) 845 9225 jed@payaluptribe.usa.us

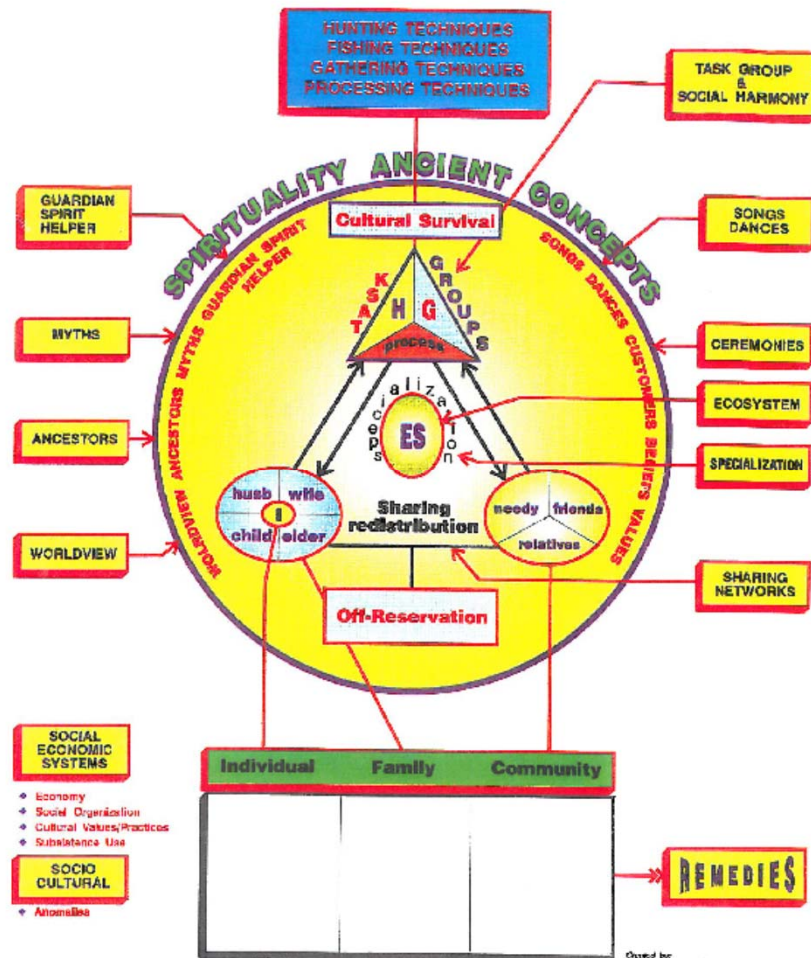
The ECO-CULTURAL SYSTEMS Management Model



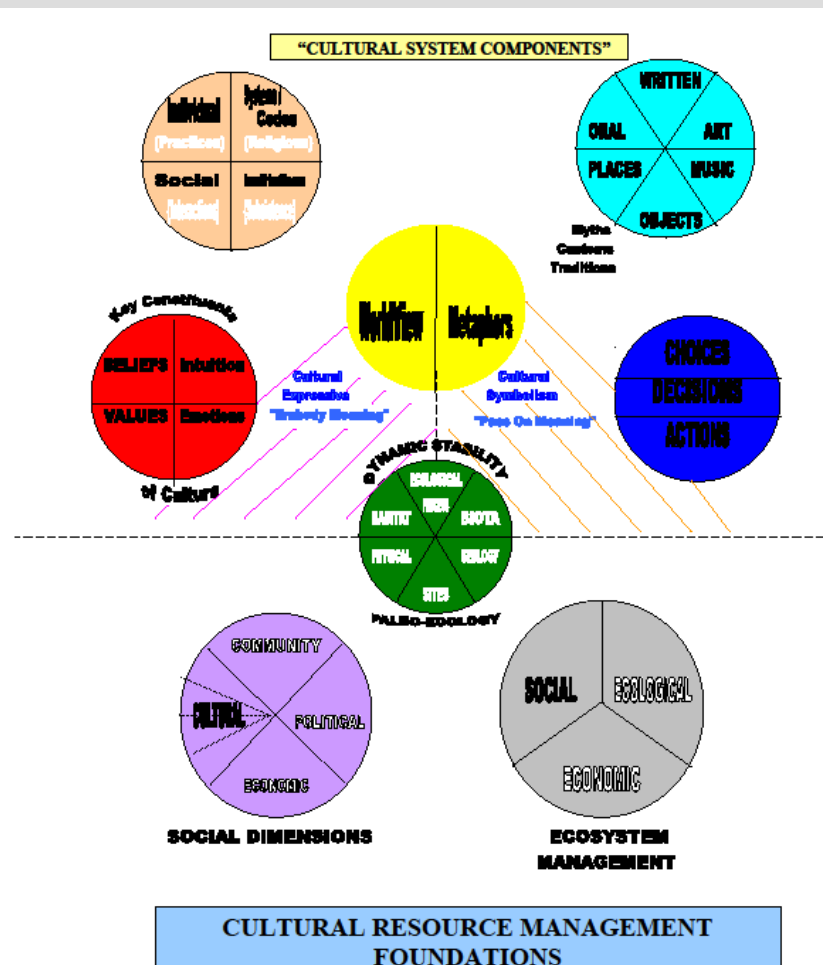
Amberson (2013) – Tribal Well-Being Model



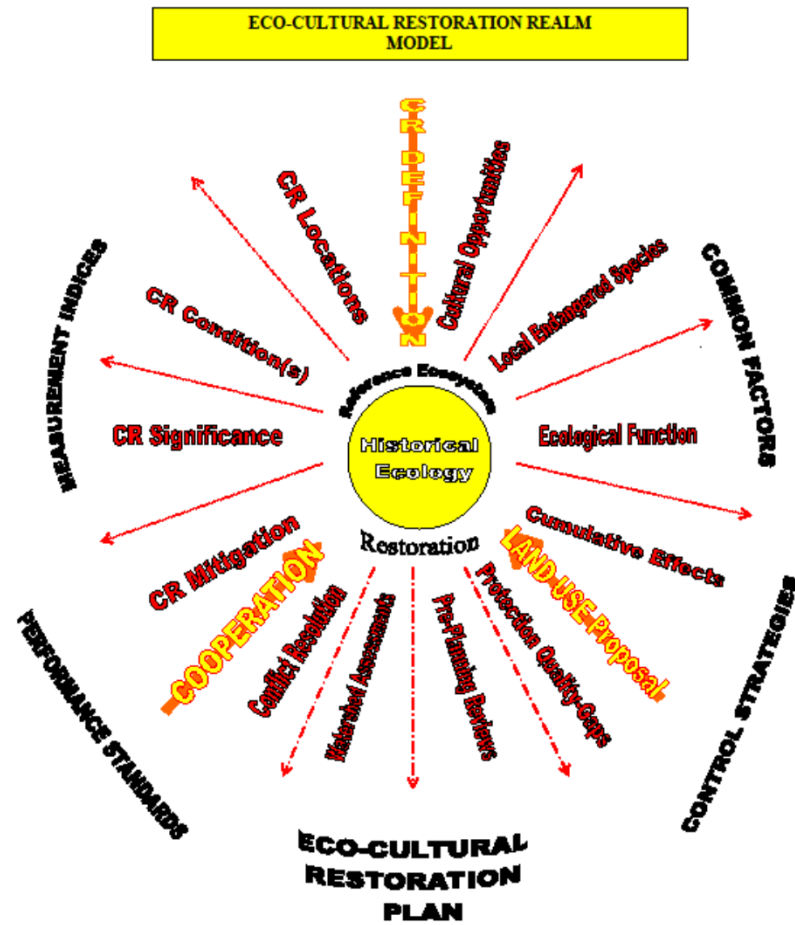
THE ECO-CENTRIC SUBSISTENCE MODEL (An Environmental Education Tool)



Created by:
Jeffrey D. Threlkeld, Director
Dawson Creek, Fish & Wildlife Program
October, 2001

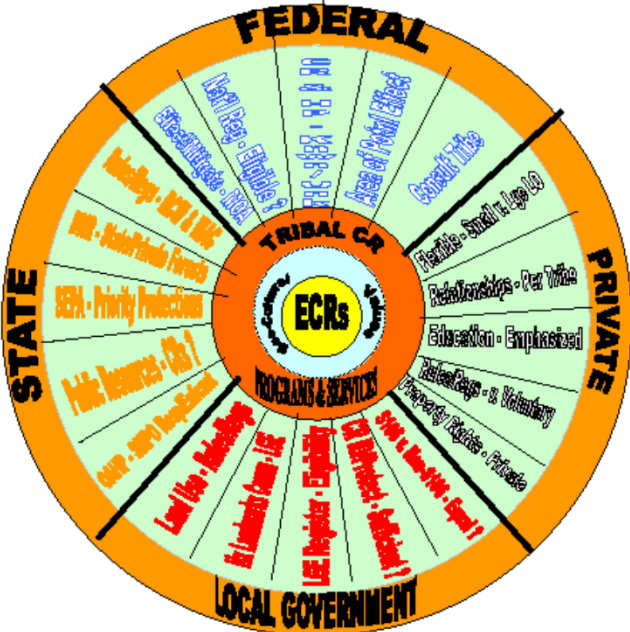


Prepared By: Jeffrey P. Thomas, Director Forest Resource Management Program-Puyallup Tribe of Indians (253) 845-9225/office
 Oct. 1994 6824 Pioneer Way West Puyallup, WA 98371 (253) 848-7341/fax jeff@puyalluptribe.nm.us



Presented at: Oregon State University - Ag 301 Class (2-28-02)

ECO-CULTURAL RESOURCES PROTECTION & MANAGEMENT COMPONENTS CONSTELLATION



Created By: Jeffrey P. Thomas, Director/Puyallup Tribal Forest Resources Program (2-28-02 Version)

Treaty Resources = Historic Ecology

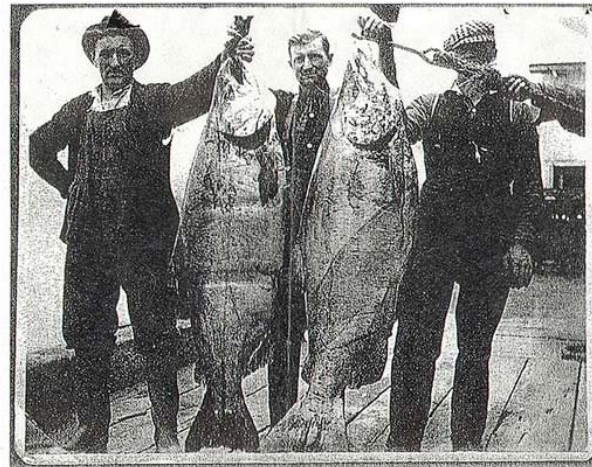
Medicine Creek Treaty of 1854

Treaties Were Pre-Payment for Future Ecosystem Services!

**Old Growth Trees (300', 700 yo):
From the Puyallup Watershed!**



Healthy, Abundant Salmon!!



This picture was taken at the Union Fisherman's Dock in Astoria, Oregon in about 1910.
Left to right - Salmon weights 116 lbs and 121 lbs.
They were salted down in 100 lb barrels and sent to Europe on sailing ships.

Today's Youth Love & Need Their Culture!

PHOTO: Amenda Butler-Smith (Puyallup/Umatilla)
Indian Beauty Pageant/3rd Place – Pendleton Round Up/2011



Prepared : Jeffrey P. Thomas, Director Forest Resource Management Program-Puyallup Tribe of Indians (253) 845-9225/office
5/25/01 6824 Pioneer Way West Puyallup, WA 98371 (253) 848-7341/fax jthomas20@mindspring.com

THE ECO-CULTURAL RESTORATION SYSTEMS UNIVERSE MODEL

